

# Installation Manual of DDC1001-2222

## Parking List

DDC1001-2222 Module (1 piece) Certificate of Compliance (1 piece)

## 1.Product parameters

Model	DDC1001-2222		
OS	Linux	Interface	1x Ethernet, 1x RS485 (Electromagnetic isolation)
CPU	1 Core 750 MHz	Ethernet Ports	1x 10M/100M NIC
RAM	64M	Dimensions/mm	110*95*42 (LxWxH)
Flash	32M	Weight/g	150
Power	≤6W	Material	Plastic Shell
Power Supply	AC/DC 12~24V	Installation	DIN-Rail
Digital Signal	2 DI(Support passive dry contact input), 2 DO(Support dry contact output, Up to 220V/5A)		
Analog Signal	2 AI((Analog input, voltage type 0-10V input), 2 AO(Analog output, voltage type, 0-10V output)		

## 2.Model Description

Model	BI/DI	BO/DO	AI	AO
DDC1001-2222	2	2	2	2
Description	Support passive dry contact input	Support dry contact output	Analog input	Analog output

## 3.Register Definition Explanation

### BI/DI—Digital Input

BI/DI Register Address	BI/DI Port	Description
1	DI1	Digital Input port
2	DI2	Digital Input port

### BO/DO—Digital Output

BO/DO Register Address	BO/DO Port	Description
1	DO1	Digital Output port
2	DO2	Digital Output port

### AI—Analog Input

AI Register Address	AI Port	Description
1	AI1	Analog Input port
2	AI2	Analog Input port

### AO—Analog Output

AO Register Address	AO Port	Description
1	AO1	Analog Output port
2	AO2	Analog Output port

## 4.Wiring Instructions

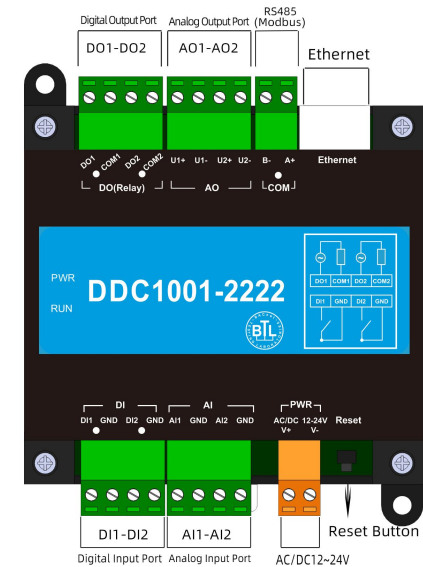


Figure1 Power and Communication Diagram

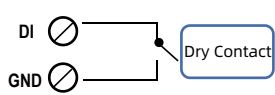


Figure 2 Digital Input

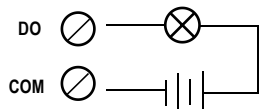


Figure 3 Digital Output

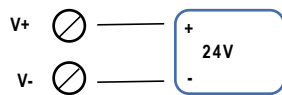


Figure 4 Power connection schematic diagram

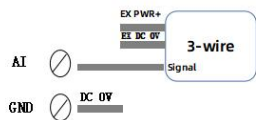


Figure 5 Analog Input



Figure 6 Analog Input



Figure 7 Analog Output(voltage)

## 5.Product dimensions

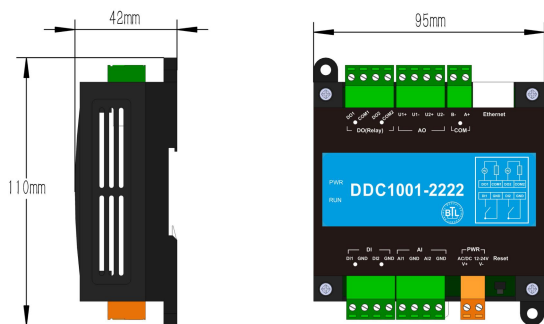


Figure 8 110mm\*95mm\*42mm(LxWxH) Weight :150g

## 6.Installation Method

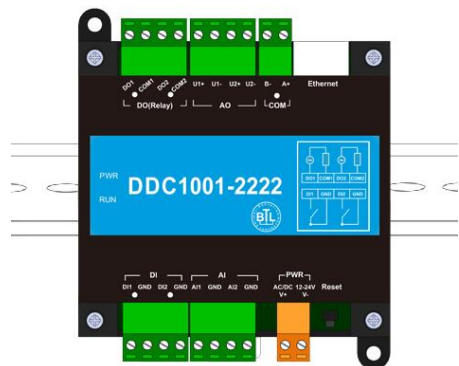
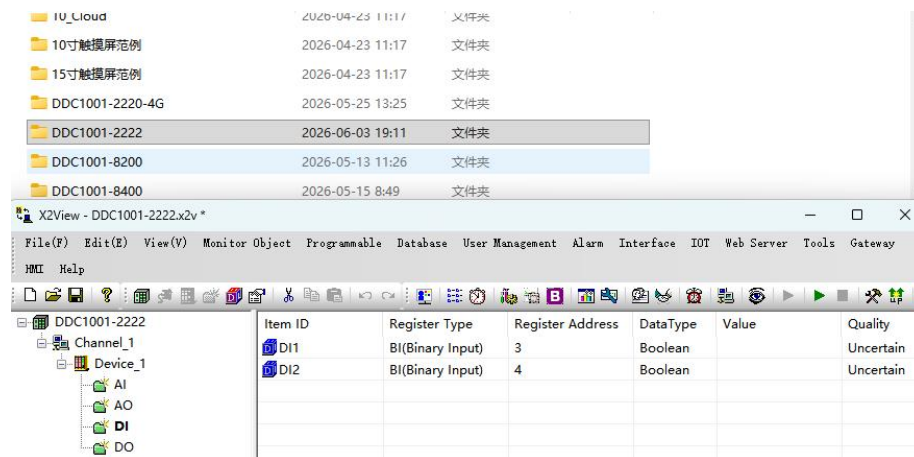


Figure 9 Rail-mounted

## FAQ

**Q①: How to use the DDC project included with X2View?**

**A①:** Just open the "Samples" folder in the Demo project of the X2View software, upload it to the DDC, and you can directly modify and use it.



**Q②: How to modify the IP address?**

**A②:** The default IP address for the product at the factory is 192.168.1.88, subnet mask 255.255.255.0, and default gateway 192.168.1.1.

When the user uses it for the first time, they connect the computer and the product directly with a network cable, and then change the computer's IP address to the same network segment as the product (such as the one on the computer)

Change the IP address to 192.168.1.55), open the browser with the ping gateway IP address, enter the product IP address 192.168.1.88, log in to the product's web server, and set the IP address in the "Network Port Settings" column.

**Q③: How to reset the IP?**

**A③:** If user forgets the product's IP address, press and hold the FUN key until three beeps sound. The Ethernet port will temporarily revert to its default IP address. Connect via Ethernet and access <http://192.168.1.88/login.html> to view the original IP address. (This takes effect immediately but is invalidated after power-off.)

**The free software:** BACnetScan scanning software, OPC2WEB software, X2OPC\_Free software, MBus scanning tools, Lumiscan green rice smart home scanning tools.

**Shanghai Sunfull Automation Co., LTD. TEL: +86-021-58776098**



**Address:** Room 603, Building 25, Lane 8633, Zhongchun Road, Qibao town, Minhang district, Shanghai.  
**Technical support Tel:** +86 021-20252795  
**Website 1:** [www.bacnetchina.com](http://www.bacnetchina.com)  
**SalesTel:** +86 13564889340 **Contacts:** Linda Chen  
**Website 2:** [www.opcmaster.com](http://www.opcmaster.com)